



**WiNGEXPRESS**  
**THE POWER OF WING**  
**SIMPLIFIED**

# TOP 5 BENEFITS OF WiNG EXPRESS

WiNG Express helps small to mid-size organizations better compete by providing a true enterprise class WLAN that delivers the dependable and secure high performance wireless voice and data required to achieve best-in-class operational efficiency and deliver best-in-class customer service. From the retail store to the warehouse, a production line in a small manufacturing plant or patient bedside in a small hospital, with WiNG Express, you can count on:

- 1** Real enterprise-class wireless network performance for small to mid-size organizations with 1 to 1,024 access points.
- 2** A robust enterprise-class WLAN you can easily deploy in minutes.
- 3** The ability to start small and easily scale to support new business needs and a growing workforce.
- 4** Powerful analytics to best manage your WLAN network and its performance.
- 5** Attractive price point for small- to mid-size enterprise-class WLANs — without compromising on enterprise-class functionality.

## The WiNG Express Access Point Family



AP 6511E  
Wallplate  
802.11n  
Up to 300  
Mbps  
2X2 MIMO



AP 6521E  
Indoor  
802.11n  
Up to 300  
Mbps  
2X2 MIMO



AP 6522E  
Indoor  
802.11n  
Up to 600  
Mbps  
2X2 MIMO



AP 6562E  
Outdoor  
802.11n  
Up to 600  
Mbps  
2x2 MIMO



AP 7522E  
Indoor  
802.11ac  
Up to 867  
Mbps  
2X2 MIMO



AP 7502E  
Wallplate  
802.11ac  
Up to 867  
Mbps  
2X2 MIMO

## All the big-business WLAN features you need, designed expressly for your small to mid-size operation.



WiNG Express is Zebra's powerful enterprise-class WLAN operating system wrapped in an easy-to-use and easy-to-understand graphical user interface that makes end-to-end WLAN management easy — no IT department required. WiNG Express provides the same advanced brainpower as our enterprise-class WiNG 5 WLAN operating system, creating the “fully network aware” WLAN, where all of your WLAN infrastructure has the intelligence required to work together to route every transmission as efficiently as possible for unsurpassed wireless performance. With WiNG Express, your users enjoy all the benefits of high-performance wireless connectivity, at the right price point for your business.

### **WiNG EXPRESS OFFERS...**

#### **Support for 1 to 1,024 access points.**

WiNG Express offers cost-effective support for the smallest possible business network with a single access point to mid-size businesses that have up to 1,024 access points in one or more locations.

#### **Easy scaling.**

WiNG Express lets you start small and grow big. Whether you start with one or one hundred access points, as your business grows and your workforce and application requirements expand, WiNG Express can grow right along with you. The flexible architecture allows you to easily expand your network to support more users and more applications in one office — or multiple sites.

#### **Flexible deployment options.**

If you have less than 26 access points in a single site, WiNG Express brings you the power of centralized management — without the need to purchase and manage a controller. The result is a new level of simplicity and a new low cost-point for enterprise-class wireless networking. This “controllerless” management allows one of your access points to simply manage an entire network of 25 access points. Since you can access WiNG Express through any browser, you get true anywhere and anytime network management — simply point your browser to

the IP address of the managing access point to view the status of all of your access points and all of their connected wireless clients. If your 25 access points are spread out in multiple locations or your business requires more than 25 access points in one or more locations, no problem — just add WiNG Express Manager (available Fall 2014) to easily manage up to 1,024 access points in all of your sites.

#### **Easy zero-touch deployment — your network is up and running in minutes.**

With WiNG Express, you don't need to understand advanced configuration options to get your network up and running. We create the configurations for you. And with over-the-air provisioning, there is no CAT5 cabling required for staging. Just power up your access points, access points will be automatically discovered and provisioned with the pre-defined configurations. Your enterprise-class WLAN is ready to go in minutes.

#### **Powerful analytics made easy.**

WiNG Express presents the volumes of information about your access points and their radios, all of your WLANs and all of the mobile devices connected to your WLANs in easy to understand screens that make it easy to monitor and manage every aspect of your enterprise-class wireless network.

# THE ANATOMY OF WiNG EXPRESS

## DASHBOARD

The dashboard provides a real-time view of your entire network. You can see the status of your access points and their radios, the client devices — including device type — connected to your access points, how much capacity is available and more. A drop-down box allows you to view the information for the last 30 minutes, the past two hours or the last 24 hours. And there are two versions of the dashboard — single site and a multi-site dashboard that provides a macro look at the status of all of the sites in your network.

## MONITOR

This function allows you to see a list of all of your access points and drill down into any specific access point to view its history for the last 30 minutes, past two hours or last 24 hours. Available metrics include the radio, antenna, mobile clients, number of re-tries and RSSI (signal strength). Since you see the full list of all functioning access points, you can ensure that only your company-owned access points are adopted. In addition, you can view the security protocols that are in force on your access points, ensuring that the data traveling over your WLAN is protected and secure.

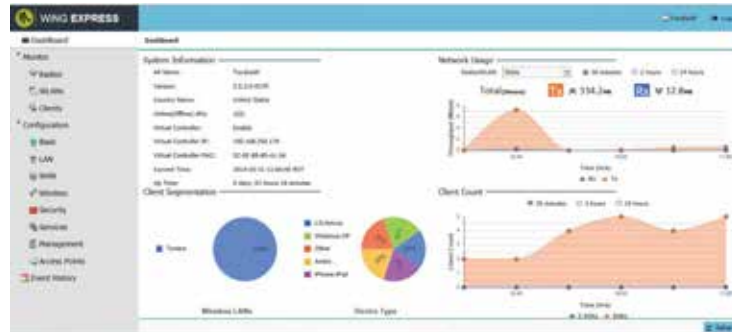
## EVENT HISTORY

This ongoing log tracks and maintains a complete history of events that have occurred on your WLAN, providing valuable trending information as well as details you need to address a specific incident and prevent a re-occurrence in the future.

## CONFIGURATION

This function makes it easy to configure every aspect of your WLAN through a series of drop-down boxes — from the wired access point interface to wireless interfaces, management and security. The settings you define are pushed out globally and automatically applied to all of your access points, regardless of how many locations you may have — dramatically simplifying the time, effort and cost of network-wide configuration.

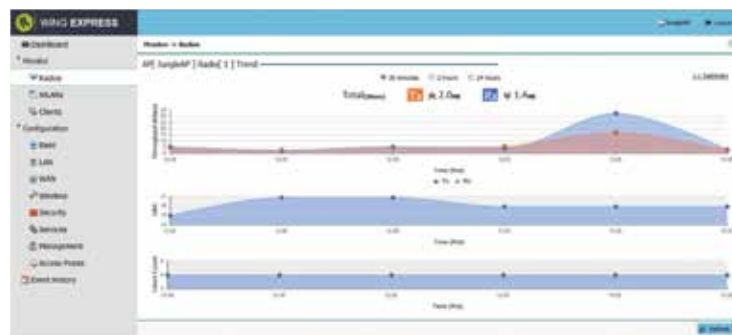
Dashboard Single site



Dashboard Multi site



Event History



Configuration

The screenshot shows the 'Configuration -> Wireless' page. The 'Wireless LAN' section is active, showing fields for Name (Jungle), Enable (checked), SSID (Jungle), Security (Secure-802.1x), Band (2.4 GHz), VLAN (1), and RADIUS settings (Host: ad.mydomain.com, Shared Secret: \*\*\*\*\*).

# FINALLY. HIGH PERFORMANCE ENTERPRISE-CLASS WIRELESS NETWORKING, SIMPLIFIED FOR THE SMALLER BUSINESS.

If you have a small to mid-size business, you share many of the same wireless networking needs as a large business. Just like the large business, your workers need enterprise-class wireless LAN (WLAN) connectivity — a WLAN that offers around-the-clock dependability that can heal itself, that offers the wired-style speeds your workers need to maximize efficiency, with rock-solid security. And just like the large business, you need tools to monitor, manage and troubleshoot the WLAN and all its connected devices.

But ‘big business’ WLAN functionality comes at a high price — an IT department with the expertise required to manage the complex features and functionality of an enterprise-class WLAN...

...until today.

## INTRODUCING WING EXPRESS

Enterprise-class wireless networking, simplified and priced for smaller businesses.



# WiNG EXPRESS SPECIFICATIONS

SPECS	WING EXPRESS AP	WING EXPRESS MANAGER
Scale (#APs)	25	1024
Management	Over-the-Air provisioning, Auto-provisioning for zero touch deployment, Network and usage trending graphs, troubleshooting tools	
Security	Layer-2/3 Stateful firewall, Radius Server, WIPS - Rogue detection and mitigation, Captive portal	
RF-Management	Smart-RF (Auto power and channel selection, dynamic interference recovery), Client Roam assist	
Quality of Service	Rate-limiting, Voice prioritization	
Services	DHCP Server	

**Give your workers all the benefits of a high-performance enterprise-class WLAN — without the complexities and the cost.**

## **WING EXPRESS.**

**BIG BUSINESS WLAN PERFORMANCE, PACKAGED FOR THE SMALLER BUSINESS.**

**FOR MORE INFORMATION, PLEASE VISIT [WWW.ZEBRA.COM/WINGEXPRESS](http://WWW.ZEBRA.COM/WINGEXPRESS) OR**

**ACCESS OUR GLOBAL CONTACT DIRECTORY AT [WWW.ZEBRA.COM/CONTACT](http://WWW.ZEBRA.COM/CONTACT)**