

# DLR-BT001



## RFID POCKET READER WITH BLUETOOTH® WIRELESS TECHNOLOGY

UHF RFID technology allows users to read from and write to a wide variety of tags, enabling quick and accurate identification of multiple items at once. Read/write operations can occur without a line-of-sight and at longer distances and faster speeds compared to other passive RFID technologies, decreasing cost and improving efficiency in item identification.

Bluetooth® wireless communication makes the reader ideal for a variety of applications and its small size makes it an easy to carry and convenient tool for improving productivity in the field, warehouse, or retail point of sale.

## KEYBOARD EMULATION AND BATCH MODE OPERATION

The HID version supports native keyboard emulation allowing the reader to interact directly with legacy applications, office automation software or any other generic solution requiring manual input.

The reader can also operate in Batch Mode allowing the reader to store EPC bar codes into the internal memory when the reader is out of radio range.

## MULTIPLE APPLICATIONS

Designed for mobile operators in outdoor and indoor areas, the DLR-BT001 reader is ideal for in-store inventory management, field sales mobility, service and maintenance applications.

When paired with a smartphone or tablet, the DLR-BT001 reader is a cost effective alternative to more expensive handheld devices.

## FEATURES

- EPC Global Class 1 Gen 2 and ISO 18000-6C compliant
- USB communications and charging
- Bluetooth wireless communication
- SPP and HID Bluetooth profiles
- Integrated linear polarized antenna
- Small, lightweight and ergonomic form factor
- Battery powered
- LCD display
- Vibration feedback

## INDUSTRY - APPLICATION

- UHF functionality to Bluetooth wireless devices
- Retail: Point of Sale
- Field Sales Mobility
- Access Control
- Inventory Management
- Service and Maintenance



## DLR-BT001

# TECHNICAL SPECIFICATIONS

### CORDLESS COMMUNICATIONS

<b>Antenna</b>	Integrated linear (horizontal)
<b>Apple compatibility</b>	Models R1170IEAPLP and R1170IUAPLP
<b>Bluetooth wireless technology</b>	Class 2 with output power 4dBm e.i.r.p.
<b>Connectivity</b>	USB Interface: USB 2.0 Full Speed (12 Mbit/second) device port
<b>Frequency Range</b>	865.600 - 867.600 MHz (ETSI EN 302 208 v. 1.4.1): Model DLR-BT001 -EU only; 902-928 MHz (FCC part 15.247): Model DLR-BT001 -US only
<b>HID profile</b>	Models R1170IEHIDP and R1170IUHIDP
<b>Number of channel</b>	4 channels compliant to ETSI EN 302 208 v. 1.4.1: Model DLR-BT001 -EU only; 50 hopping channels compliant to FCC part 15.247: Model DLR-BT001 -US only
<b>Virtual comport</b>	Baudrate: up to 230.400 kbps; Databits: 8; Stopbits: 1 Parity: none; Flow control: none

### RFID DECODING CAPABILITY

<b>Standards supported</b>	EPC Global Class 1 Gen 2 and ISO 18000-6C compliant
----------------------------	---

### ELECTRICAL

<b>Battery</b>	Battery Type: Li-Ion 3.7V, 570 mAh
<b>Battery life</b>	Operating: >12 hours with 40,000 tag readings; Standby: >5 days
<b>Battery charging time</b>	2 hours (typical)
<b>Internal buffer size</b>	48 kByte (equivalent to 4096 EPC codes @ 96 bit) (TBC)
<b>RF power</b>	Programmable in 18 levels from 5 dBm e.r.p. to 22 dBm e.r.p. / 3 mW e.r.p. to 150 mW e.r.p.

### ENVIRONMENTAL

<b>Temperature</b>	Storage: -20 to 60 °C / -4 to 140 °F Operating: 0 to 45 °C / 32 to 113 °F
--------------------	--

### INTERFACES

<b>User interface</b>	Button #1: ON/OFF Button #2: Trigger LED #1: Power indication and battery status: Green = high; Red = low LED #2: Communication activity: Blue = Bluetooth wireless technology; Orange = USB Buzzer: Bi-tonal for events signaling Vibration: For events signaling Display: LCD Alphanumeric (8 characters x 2 lines)
-----------------------	--

### PHYSICAL CHARACTERISTICS

<b>Dimensions</b>	Reader: 9.9 x 5.4 x 2.0 cm <sup>3</sup> / 3.9 x 2.1 x 0.8 in <sup>3</sup>
<b>Length of USB cable</b>	1.5 m / 4.9 ft
<b>Weight</b>	57.0 g / 2.0 oz

### READING PERFORMANCE

#### *Depends on the UHF RFID TAG*

### READING RANGES

<b>Reading range</b>	Up to 90.0 cm / 35.4 in
----------------------	-------------------------

### SAFETY & REGULATORY

<b>Standard compliance</b>	ISO 18000-6C/EPC C1G2
----------------------------	-----------------------

### UTILITIES

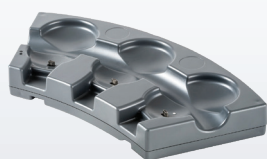
<b>DL RFID software tool</b>	RFID configurations tools are available for download
------------------------------	--

### WARRANTY

<b>Warranty</b>	1-Year Factory Warranty
-----------------	-------------------------

## ACCESSORIES

### Chargers



- MBC-DLRBT001 3-Slot Charger Battery Slot